

# Transformer Terminals 4 Hole Fixing

Eland Product Group **FCA**



## Application

The transformer terminal four hole fixing, also known as a four hole crimp lug, connects to the four fixing studs on transformer fixing points to give the best surface contact possible.

FT70 to FT300 are brazed palm type.

FT400 to FT1000 are formed from 1 single tube.

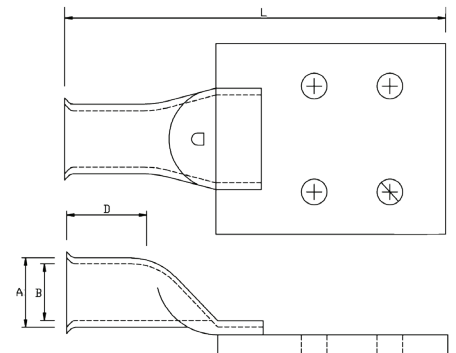
## Standards

BS4579

## Dimensions

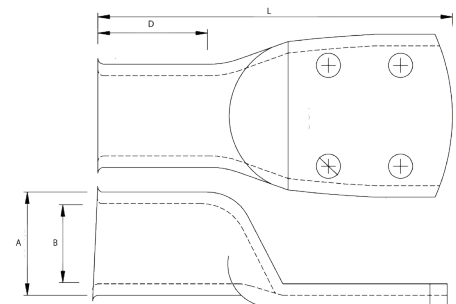
### Brazed Palm 4 Hole Terminals

Eland Part Number	Total Width A mm	Entry Width B mm	Entry Depth D mm	Total Length L mm
FT70-8	15.0	11.5	18.0	106.0
FT95-8	17.0	13.5	24.0	112.0
FT120-8	19.0	15.0	27.0	116.0
FT150-8	21.0	16.5	27.0	121.0
FT185-8	23.0	18.5	30.0	125.0
FT240-8	26.0	21.0	32.0	127.0
FT300-8	28.0	23.0	37.0	135.0



### Formed 4 Hole Terminals

Eland Part Number	Total Width A mm	Entry Width B mm	Entry Depth D mm	Total Length L mm
FT400-8	36.0	27.0	38.0	123.0
FT500-8	38.0	30.0	60.0	149.0
FT630-8	44.0	34.0	65.0	152.0
FT800-8	49.0	38.2	56.0	164.0
FT1000-8	53.0	42.5	57.5	173.0



The information contained within this datasheet is for guidance only – actual cable dimensions should be considered before making final selection as these may vary due to manufacturing tolerances.